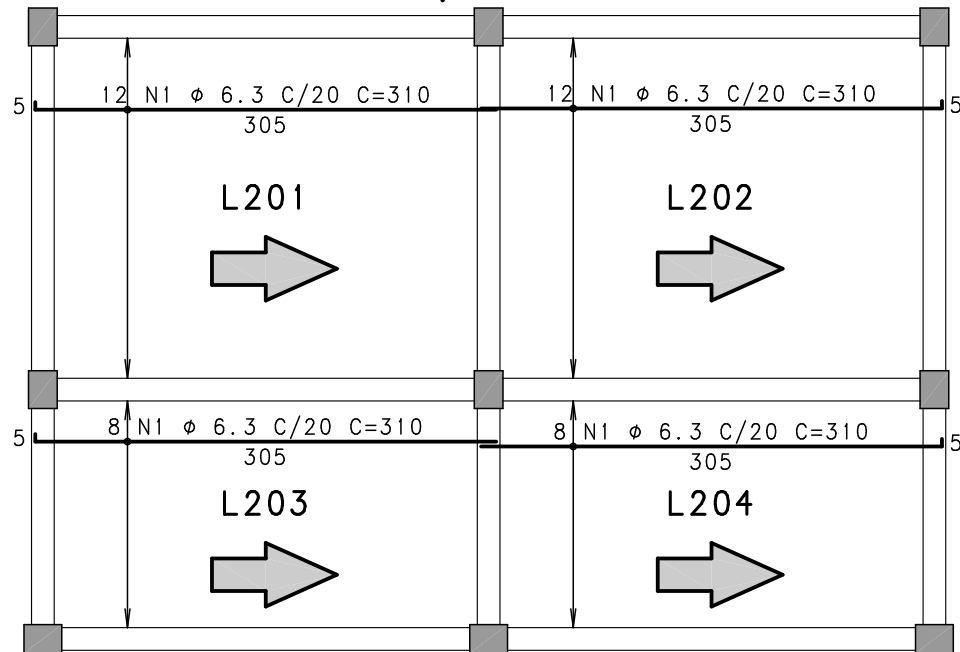
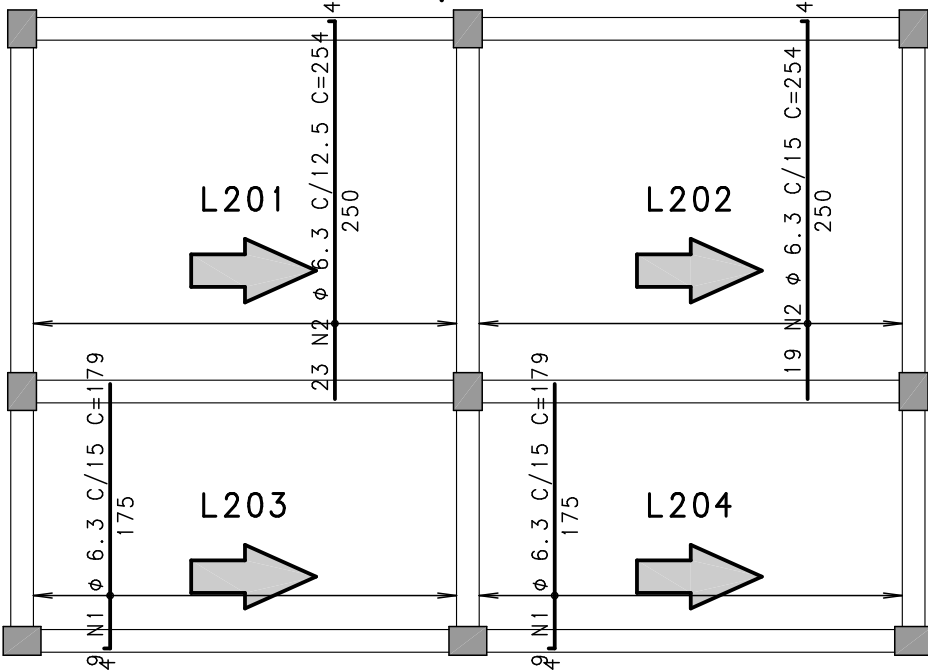


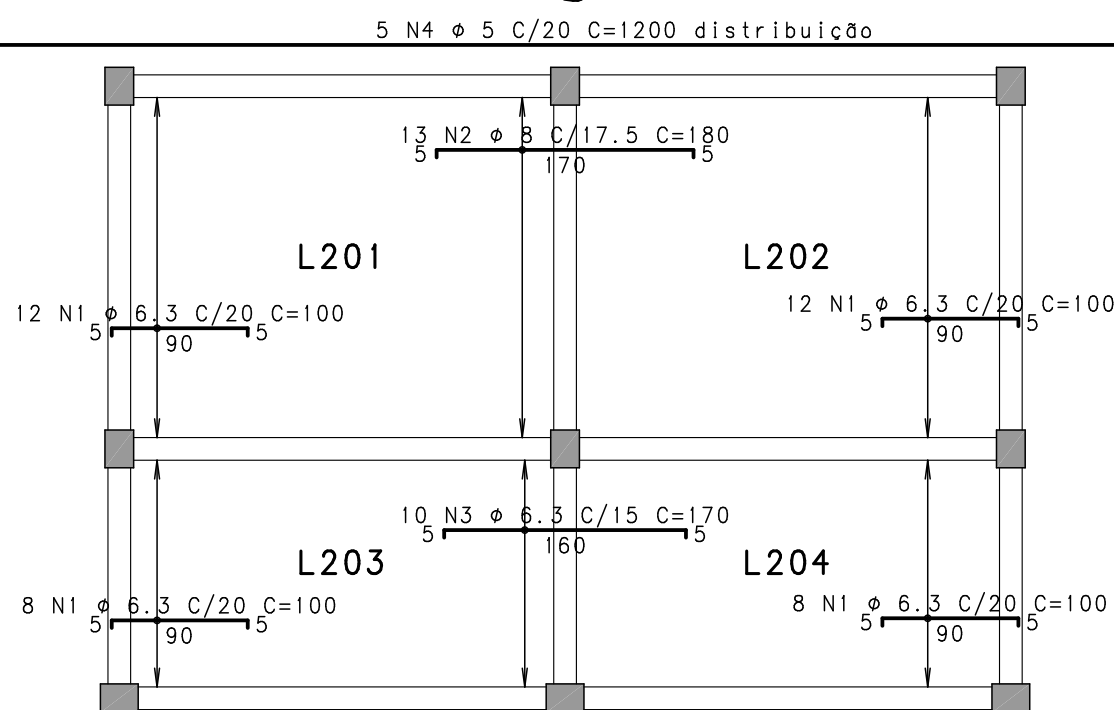
200 - Armadura positiva horizontal



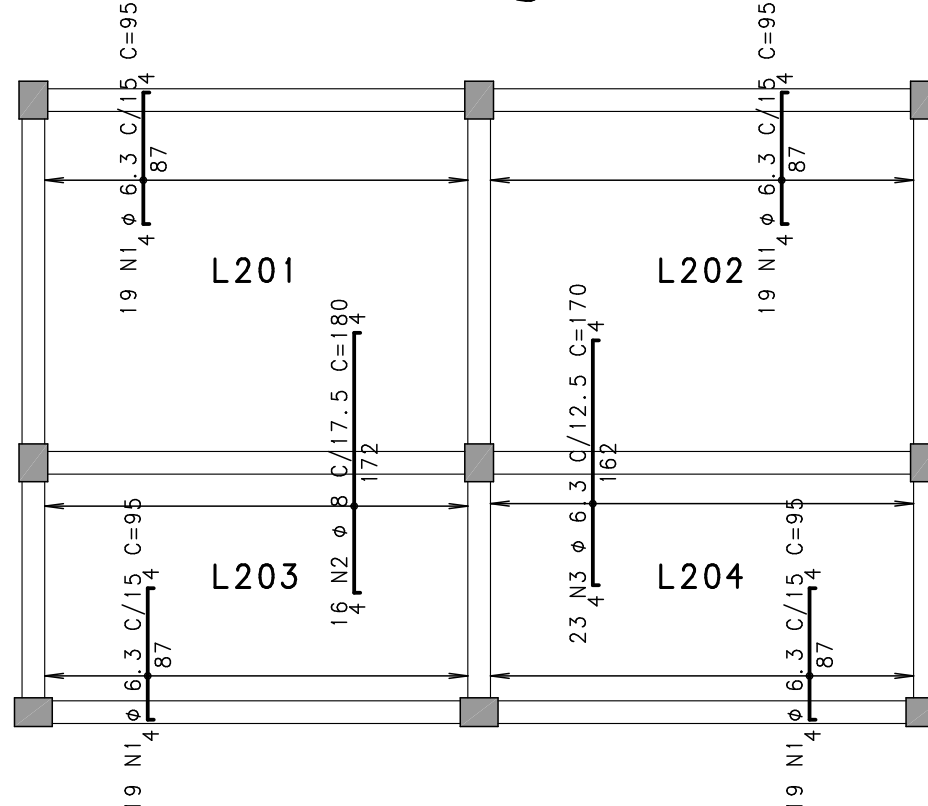
200 - Armadura positiva vertical



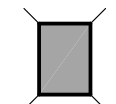
200 - Armadura negativa horizontal



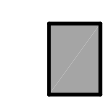
200 - Armadura negativa vertical



CONVENÇÃO DE PILARES



NASCE



CONTINUA

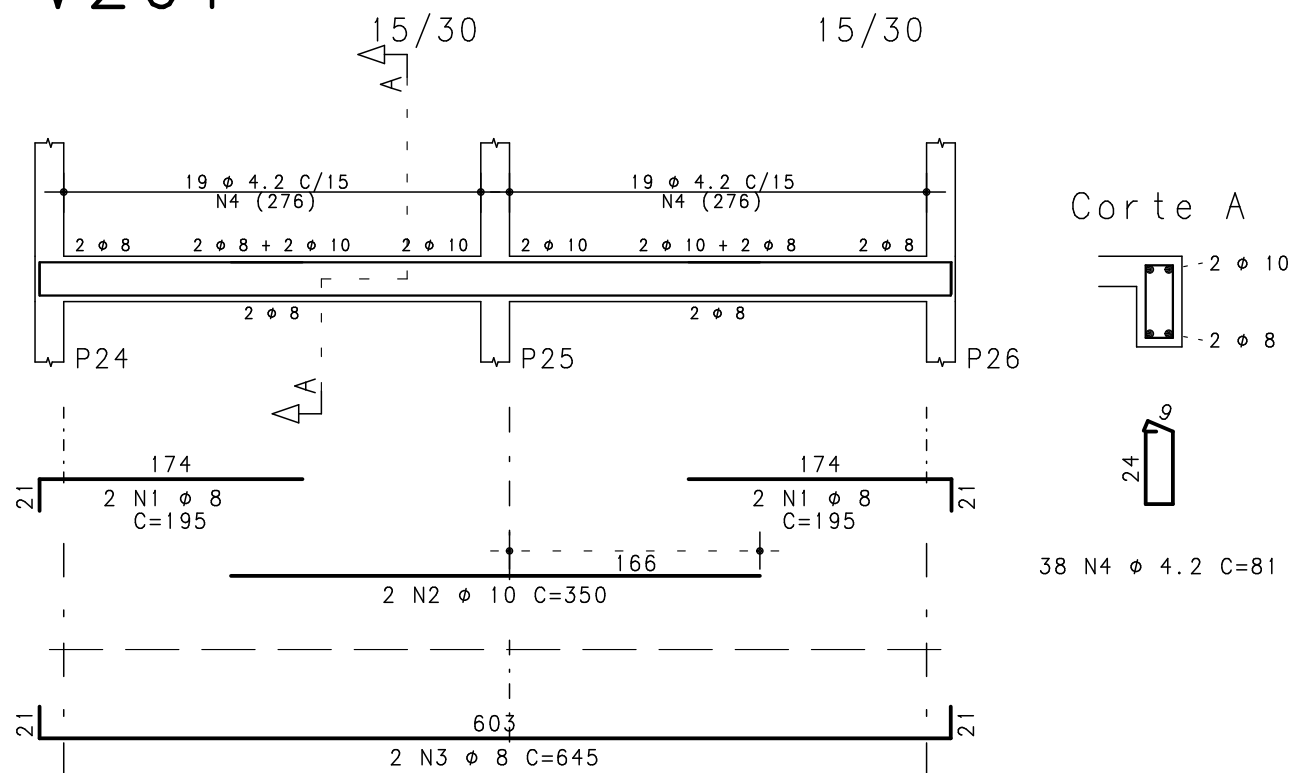


MORRE

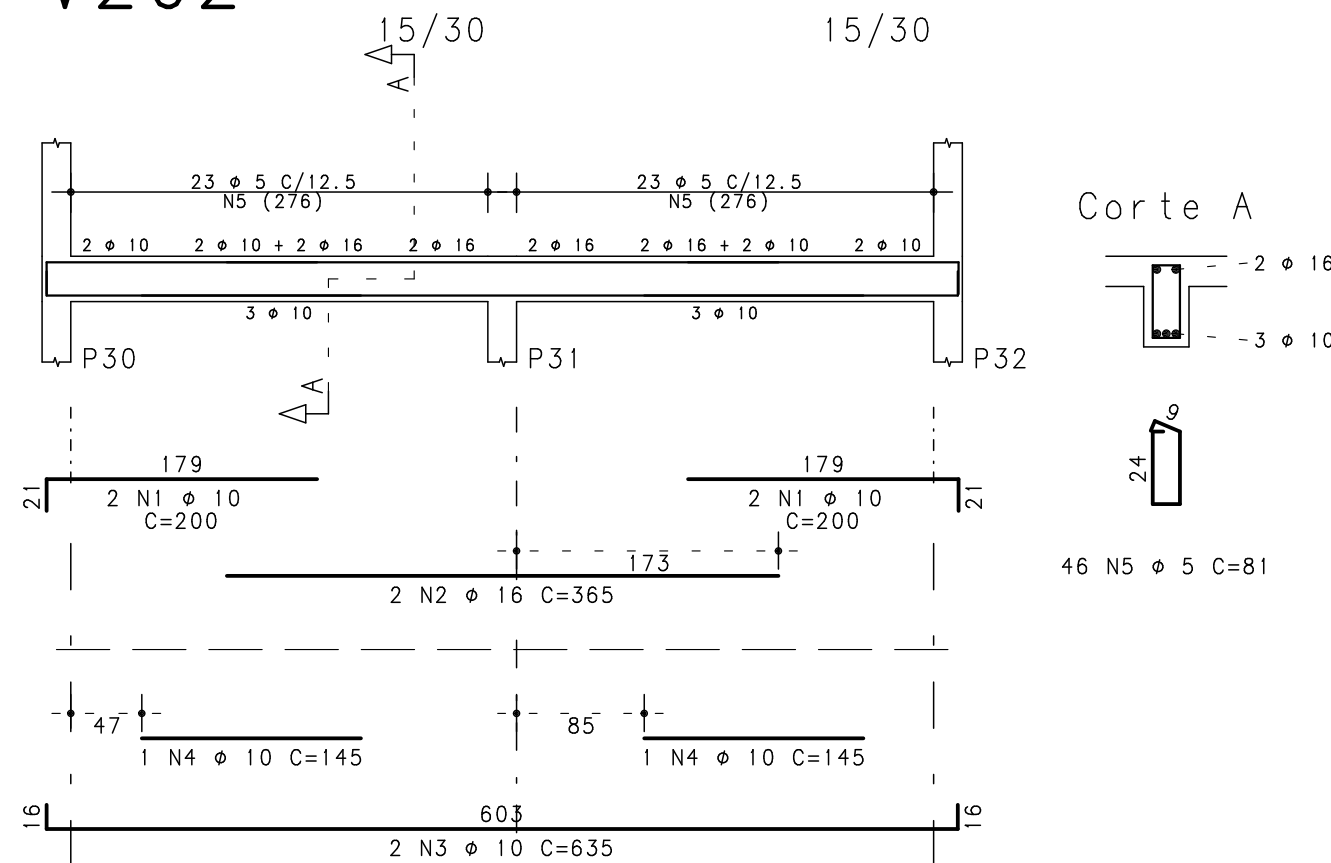
	AÇO	POS	BIT (mm)	QUANT	COMPRIMENTO	
					UNIT (cm)	TOTAL (cm)
V201	50A	1	8	4	195	780
	50A	2	10	2	350	700
	50A	3	8	2	645	1290
	60B	4	4.2	36	81	3078
V202	50A	1	10	4	200	800
	50A	2	16	2	365	730
	50A	3	10	2	635	1270
	60B	5	5	46	81	3726
V203	50A	1	8	4	200	800
	50A	2	10	2	350	700
	50A	3	8	2	650	1300
	60B	4	4.2	36	81	2916
V204	50A	1	8	2	465	930
	50A	2	8	2	460	920
	60B	3	4.2	25	81	2025
V205	50A	1	10	2	465	930
	50A	2	10	1	150	150
	50A	3	10	2	450	900
	60B	4	4.2	25	81	2025
V206	50A	1	8	2	465	930
	50A	2	8	2	460	920
	60B	3	4.2	25	81	2025
200 - Armadura negativa horizontal	50A	1	6.3	40	100	4000
	50A	2	8	13	180	2340
	50A	3	6.3	10	170	1700
	60B	4	5	5	1200	6000
200 - Armadura negativa vertical	50A	1	6.3	76	95	7220
	50A	2	8	16	180	2880
	50A	3	6.3	23	170	3910
	60B	4	5	5	1200	6000
200 - Armadura positiva horizontal	50A	1	6.3	40	310	12400
	50A	1	6.3	38	179	6802
200 - Armadura positiva vertical	50A	2	6.3	42	254	10668
	60B	3	4.2	25	81	2025

RESUMO AÇO CA 50-60				
AÇO	BIT (mm)	COMPR (m)	PESO (kg)	
60B	4.2	121	13	
60B	5	97	15	
50A	6.3	467	114	
50A	8	131	52	
50A	10	57	35	
50A	16	7	12	
Peso Total		60B =	28 kg	
Peso Total		50A =	213 kg	

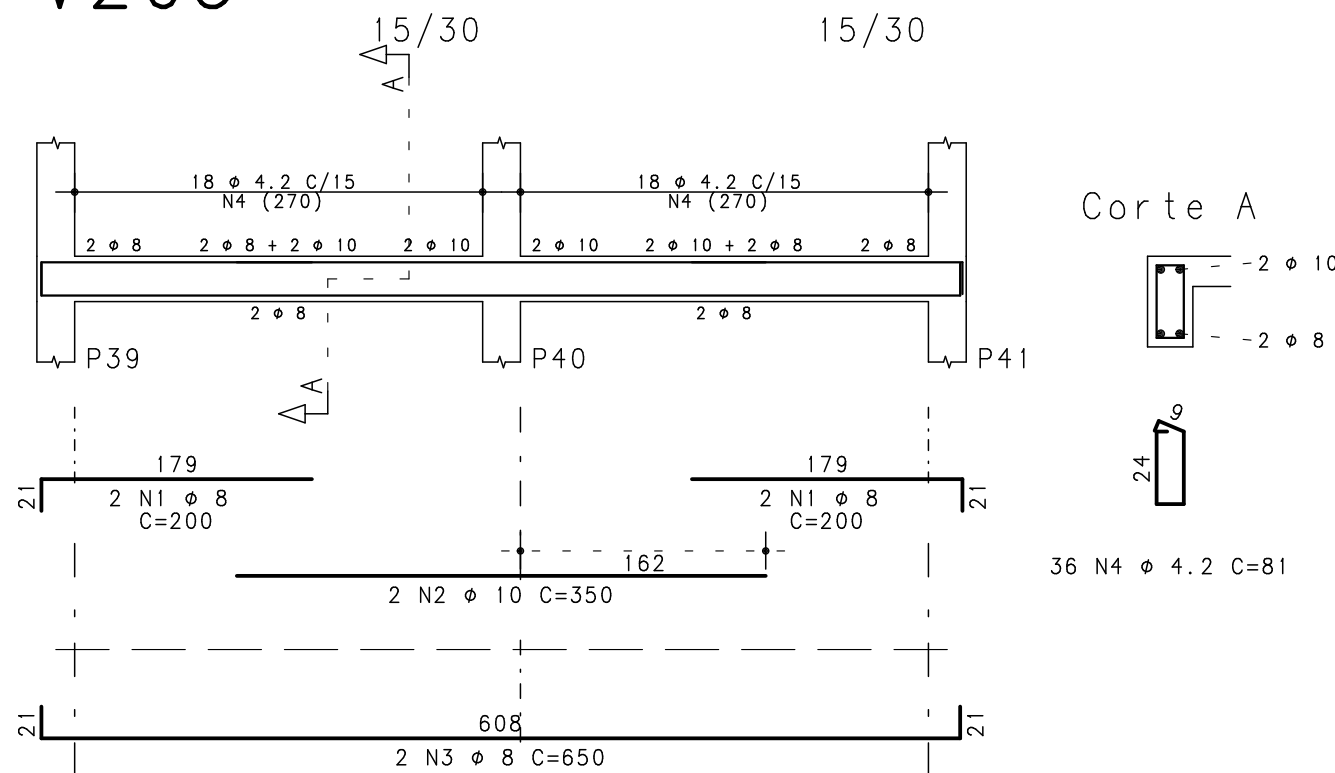
V201



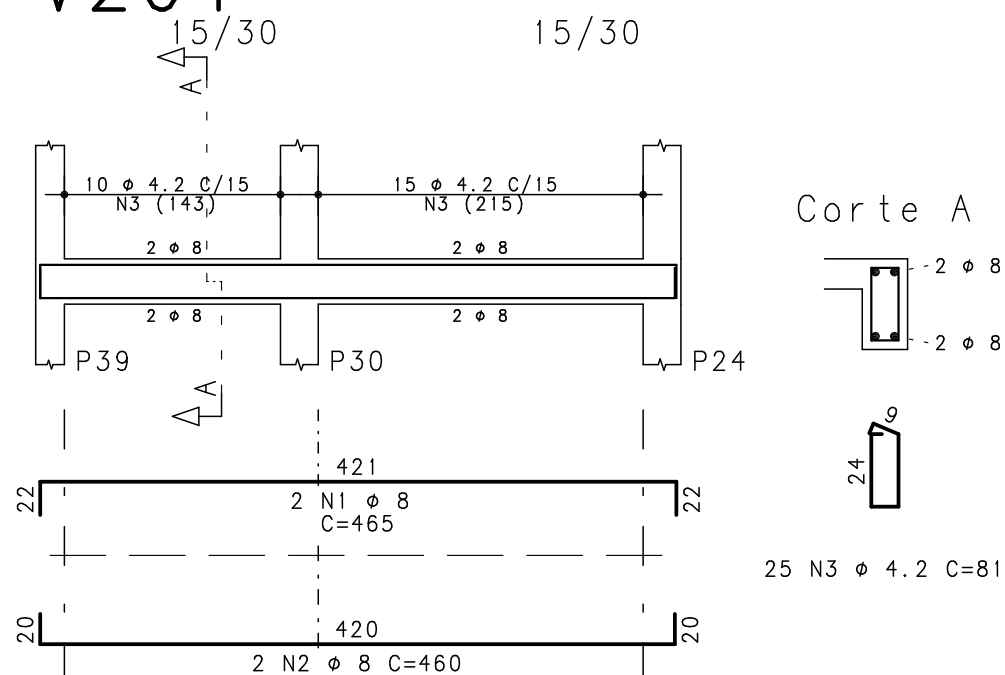
V202



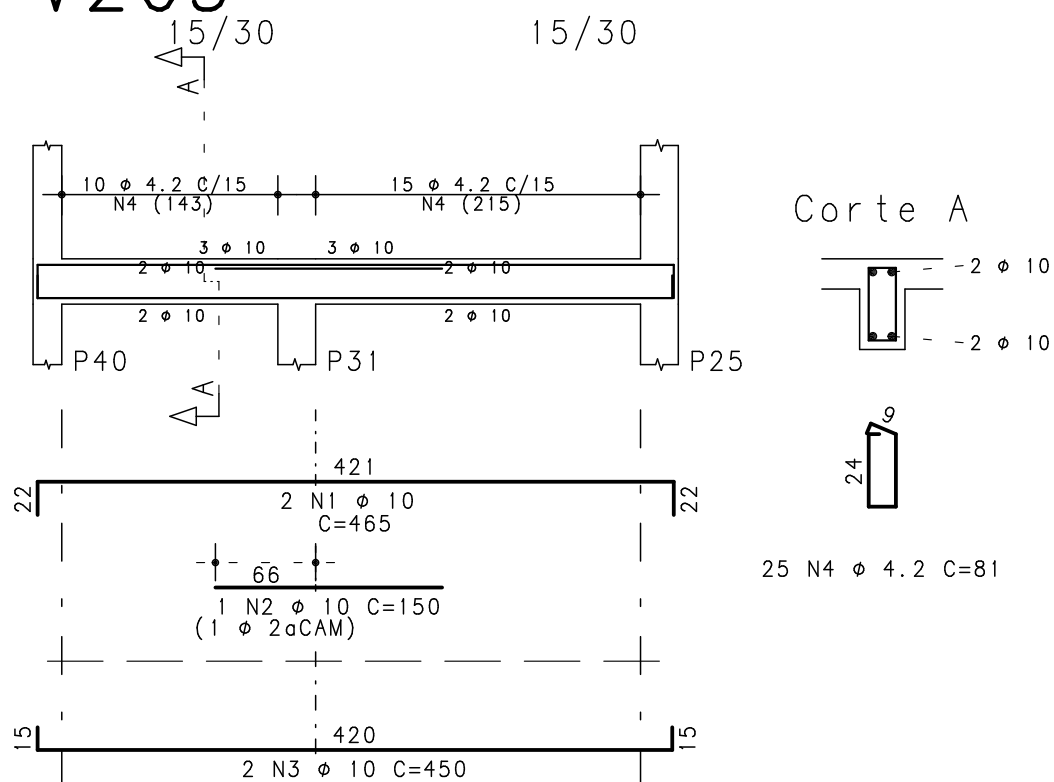
V203



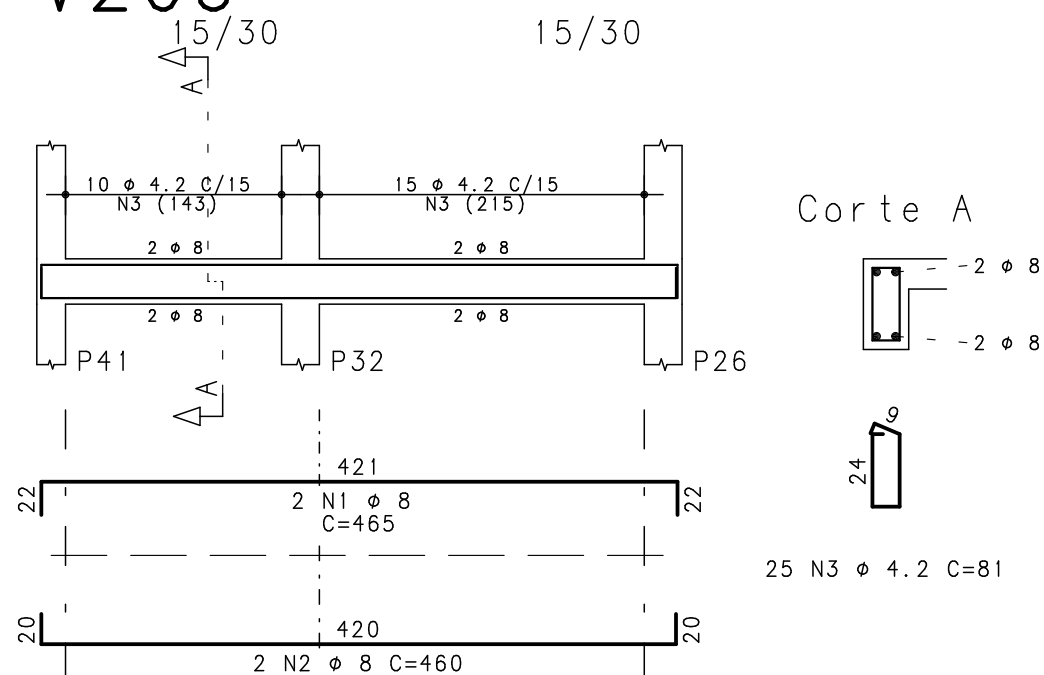
V204



V205



V206



Rua Quinze de Novembro, 553/405
Pelotas - RS - CEP 96215-000
Telefone: (51) 32291500
e-mail: fernando@simch.com.br
e-mail: paulo@simch.com.br

200 - Armadura negativa horizontal
200 - Armadura negativa vertical
200 - Armadura positiva horizontal
200 - Armadura positiva vertical
V201 / V202 / V203 / V204
V205 / V206

Fernando Petrucci Gigante
Eng. Civil - CREA-RS 45232

Paulo Rogério Maffini Simch
Eng. Civil - CREA-RS 78208

2			
1			
0			
Rev	Data	Autor	Assunto

CONCRETO fck =250 kgf/cm2			SOBRECARGA PREVISTA		OBRA N.º 0001	
CLIENTE SECRETARIA DA SAÚDE-PELOTAS					DES. N.º	
OBRA UBS TIPO 2 - VILA NOVA					021	
TÍTULO Nível 200 Fôrmas - Lajes - Vigas						
DATA 18/08/2015		ESCALA 1: 50	DESENHO UBS-200-vig-021-R00		COORD.	REV. N.º 00
						ENG.º